

[www.londonschool.com](http://www.londonschool.com)



Dates and Fees 2020

# Course fees and facts

## Courses for Experienced Professionals 30+

| Course name  | Levels                     | Weekly fees (GBP)   | Exam fee (GBP) | Start dates                       | Course code | Hours per week | Times (by location)                | Length wks                 | Group size | Age    | Av. age | No. of lunches | Website link             |                           |
|--|----------------------------|---------------------|----------------|-----------------------------------|-------------|----------------|------------------------------------|----------------------------|------------|--------|---------|----------------|--------------------------|---------------------------|
| Business & Professional English 30+                    | Full time                  | 4-8                 | 1175           | -                                 | Any Monday  | BP30+          | 30                                 | 09.00-17.00<br>08.45-16.45 | 1-8        | 6<br>4 | 30+     | 42             | 5<br>3                   | www.londonschool.com/bp30 |
|  | Part time                  | 4-8                 | 755            | -                                 | Any Monday  | BP30+AM        | 15                                 | 09.00-12.30<br>08.45-12.00 | 1-8        | 6<br>4 | 30+     | 41             | 5<br>3                   | www.londonschool.com/bp30 |
| Combi 15   | Combi 10 (Canterbury only) | 4-8                 | 2060           | -                                 | Any Monday  | BP30+C (30)    | 15+15                              | 09.00-17.00<br>08.45-16.45 | 1-8        | 6<br>4 | 30+     | 44             | 5<br>3                   | www.londonschool.com/bp30 |
|  |                            | 4-8                 | 1625           | -                                 | Any Monday  | BP30+C (25)    | 15+10                              | -<br>08.45-15.45           | 1-8        | -<br>4 | 30+     | 44             | -<br>3                   | www.londonschool.com/bp30 |
| Intercultural Competence Combination                   | 6-8                        | 2645                | -              | Any Monday                        | ICC         | 15+15          | 09.00-17.00<br>08.45-16.45         | 1                          | 6<br>4     | 30+    | 45      | 5<br>3         | www.londonschool.com/icc |                           |
| Global Leadership Combination                          | 6-8                        | 2645                | -              | Any Monday                        | GLC         | 15+15          | 09.00-17.00<br>08.45-16.45         | 1                          | 6<br>4     | 30+    | 41      | 5<br>3         | www.londonschool.com/glc |                           |
| English for Specific Purposes Combination <sup>1</sup> | 4-8                        | 1805 or 2060        | -              | Any Monday                        | ESP         | 15+15          | see GE30+/BP30+<br>see GE30+/BP30+ | 1-8                        | 8/6<br>6/4 | 30+    | 39      | 5<br>3         | www.londonschool.com/esp |                           |
| Legal English: Commercial Lawyers                      | 6-8                        | 1250                | -              | 20/1, 16/3, 15/6, 13/7, 7/9, 2/11 | LGL         | 30             | 09.00-17.00<br>-                   | 1                          | 6<br>-     | 30+    | 37      | 5<br>-         | www.londonschool.com/lgl |                           |
| English for Human Resources Professionals              | 5-8                        | 1250                | -              | 2/3, 1/6, 27/7, 21/9, 16/11       | EHR         | 30             | 09.00-17.00<br>-                   | 1                          | 6<br>-     | 30+    | 38      | 5<br>-         | www.londonschool.com/ehr |                           |
| English for Lecturers                                  | 6-8                        | 1250                | -              | 25/5, 12/10                       | EFL         | 30             | 09.00-17.00<br>-                   | 1                          | 10<br>-    | 30+    | 43      | 5<br>-         | www.londonschool.com/efl |                           |
| On Demand Closed Group course up to 10 participants    | -                          | 5995 per group week | -              | Flexible                          | OND         | Up to 30       | Flexible<br>Flexible               | Flexible                   | 10<br>8    | 20+    | -       | 5<br>3         | www.londonschool.com/ond |                           |

## Courses for Professionals aged 20-35

| Course name                                | Levels | Weekly fees (GBP) | Exam fee (GBP) | Start dates  | Course code | Hours per week | Times (by location) | Length wks | Group size | Age   | Av. age | No. of lunches | Website link               |
|--|--------|-------------------|----------------|--|-------------|----------------|---------------------|------------|------------|-------|---------|----------------|----------------------------|
| English for Work and Careers fixed 2 weeks | 5-7    | £1180 (2 weeks)   | -              | 20/1, 17/2, 23/3, 20/4, 25/5, 29/6, 13/7, 27/7, 24/8, 14/9, 5/10, 9/11, 30/11  | EWC         | 24             | 09.15-15.45<br>-    | 2          | 10<br>-    | 20-35 | 29      | 5<br>-         | www.londonschool.com/ewc   |
| Legal English 20-30 fixed 3 weeks          | 5-8    | 1770 (3 weeks)    | -              | 6/1, 3/2, 2/3, 4/5, 1/6, 29/6, 27/7, 24/8, 19/10, 23/11                        | LEN         | 24             | 09.30-16.00<br>-    | 3          | 10<br>-    | 20-30 | 24      | 5<br>-         | www.londonschool.com/len   |
| TOLES preparation (for LEN or LGL)         | 5-8    | 590               | 150            | 27/1, 24/2, 23/3, 25/5, 22/6, 20/7, 17/8, 14/9, 9/11, 14/12 (Exam on last day) | TOLES       | 24             | 09.30-16.00<br>-    | 1          | 10<br>-    | 20+   | 24      | 5<br>-         | www.londonschool.com/toles |

## Individual Training

| Course name                            | Levels | Weekly fees (GBP)         | Exam fee (GBP) | Start dates        | Course code | Hours per week  | Times (by location)                     | Length wks | Group size | Age | Av. age | No. of lunches | Website link               |
|--|--------|---------------------------|----------------|--------------------|-------------|-----------------|---|------------|------------|-----|---------|----------------|----------------------------|
| 1:1 Standard                           | 1-9    | 87 per hour <sup>2</sup>  | -              | AM, PM or Full Day | IND         | 15, 20 or 30/wk | 09.00 start <sup>3</sup><br>08.45 start | Flexible   | 1<br>1     | 18+ | 44      | 5<br>3         | www.londonschool.com/ind   |
| 2:1 Standard                           | 1-9    | 100 per hour <sup>2</sup> | -              | AM, PM or Full Day | IND         | 15, 20 or 30/wk | 09.00 start <sup>3</sup><br>08.45 start | Flexible   | 1<br>1     | 18+ | 44      | 5<br>3         | www.londonschool.com/ind   |
| Skype                                  | 1-9    | 60 per hour               | -              | Flexible           | SKYPE       | 5               | Flexible<br>Flexible                    | Flexible   | -<br>-     | Any | -       | -<br>-         | www.londonschool.com/skype |
| Voice & Accent Training (Face to Face) | 5-9    | 95 per hour               | -              | Flexible           | VT          | 5               | Flexible<br>Flexible                    | Flexible   | 1<br>-     | 18+ | -       | -<br>-         | www.londonschool.com/voice |
| Voice & Accent Training (Skype)        | 5-9    | 80 per hour               | -              | Flexible           | VT          | 5               | Flexible<br>Flexible                    | Flexible   | 1<br>-     | 18+ | -       | -<br>-         | www.londonschool.com/voice |

## General and Academic English, Exam Courses

| Course name                           | Levels    | Weekly fees (GBP)            | Exam fee (GBP)  | Start dates  | Course code | Hours per week | Times (by location)                                  | Length wks  | Group size | Age | Av. age | No. of lunches | Website link                     |
|---------------------------------------|-----------|------------------------------|-----------------|--|-------------|----------------|--|-------------|------------|-----|---------|----------------|----------------------------------|
| Intensive General English             | 2-8       | See fees table               | -               | See course dates   | IGE         | 22             | -<br>09.15-15.45 <sup>4</sup>                        | Min. 2 wks  | -<br>12    | 18+ | 29      | -<br>5         | www.londonschool.com/ige         |
| Intensive General English Combination | 2-8       | 1670                         | -               | Any Monday   | IGE-C       | 15+15          | -<br>09.15-17.00                                     | Min. 2 wks  | -<br>12    | 18+ | 27      | -<br>5         | www.londonschool.com/ige         |
| General English 30+                   | Full time | 3-7                          | 685             | -  | Any Monday  | GE30+          | 09.15-15.45 <sup>4</sup><br>08.45-15.15 <sup>4</sup> | 1-8         | 8<br>6     | 30+ | 44      | 5<br>3         | www.londonschool.com/ge30        |
|                                       | Combi 15  | 3-7                          | 1805            | -  | Any Monday  | GE30+C (30)    | 09.15-17.00<br>08.45-16.45                           | 1-8         | 8<br>6     | 30+ | 45      | 5<br>3         | www.londonschool.com/ge30        |
| English for University                | 5-7       | 1800 (4 wks)                 | -               | 9/3, 11/5, 27/7, 24/8, 26/10   | EFU         | 24             | -<br>09.15-15.45 <sup>4</sup>                        | 4           | -<br>12    | 18+ | 24      | -<br>5         | www.londonschool.com/efu         |
| Cambridge B2 First (formerly FCE)     | 5-6       | 3600 (8 wks)                 | 160             | Course: 27/4, 19/10. Exam: 20/6, 12/12   | FCE         | 24             | -<br>09.15-15.45                                     | 8           | -<br>12    | 18+ | 31      | -<br>5         | www.londonschool.com/fce         |
| Cambridge C1 Advanced (formerly CAE)  | 7-8       | 1800 (4 wks)<br>3600 (8 wks) | 160             | Course: 27/4, 3/8, 19/10. Exam: 20/6, 28/8, 12/12                                    | CAE         | 24             | -<br>09.15-15.45                                     | 4 or 8      | -<br>12    | 18+ | 25      | -<br>5         | www.londonschool.com/cae         |
| IELTS                                 | 5-7       | 1800 (4 wks)<br>3600 (8 wks) | 190<br>220 SELT | Course: 13/1, 16/3, 1/6, 27/7, 31/8, 26/10. Exam: 7/3, 9/5, 25/7, 22/8, 24/10, 19/12 | IELTS       | 24             | -<br>09.15-15.45                                     | 4 or 8      | -<br>12    | 18+ | 25      | -<br>5         | www.londonschool.com/ielts       |
| Trinity Cert TESOL (teacher training) | 7-9       | 999 (4 wks)                  | 150             | Course: 2/3, 1/6, 7/9  | TESOL       | 30             | -<br>09.30-17.00                                     | 4           | -<br>10    | 18+ | 31      | -<br>5         | www.londonschool.com/tesol       |
| Academic Year (IGE+EFU+IELTS)         | 2-8       | See fees table               | -               | See course dates   | AY          | 22-24          | -<br>See IGE, EFU, IELTS                             | Min. 24 wks | -<br>12    | 18+ | 28      | -<br>5         | www.londonschool.com/ay          |
| Linguaskill: Business or General      | Exam only | -                            | -               | See website  | LINGUASKILL | -              | -<br>-   | -           | -<br>-     | 18+ | -       | -<br>-         | www.londonschool.com/linguaskill |

## Intensive General English and Academic Year fees\*<sup>5</sup>

| Weeks      | 2   | 3    | 4    | 5    | 6    | 7    | 8    | 9    | 10   | 11   | 12   | 13   | 14   | 15   | 16   | 17   | 18   | 19   | 20   | 21   | 22   | 23   | 24   | 25+               |
|------------|-----|------|------|------|------|------|------|------|------|------|------|------|------|------|------|------|------|------|------|------|------|------|------|-------------------|
| Cumulative | 860 | 1290 | 1720 | 2120 | 2515 | 2905 | 3290 | 3670 | 4040 | 4405 | 4765 | 5120 | 5470 | 5815 | 6155 | 6490 | 6820 | 7145 | 7465 | 7780 | 8090 | 8390 | 8685 | 8685<br>+295/week |
| Weekly     | 430 | 430  | 430  | 424  | 419  | 415  | 411  | 408  | 404  | 400  | 397  | 394  | 391  | 388  | 385  | 382  | 379  | 376  | 373  | 370  | 368  | 365  | 362  | 295               |

### Key to our locations

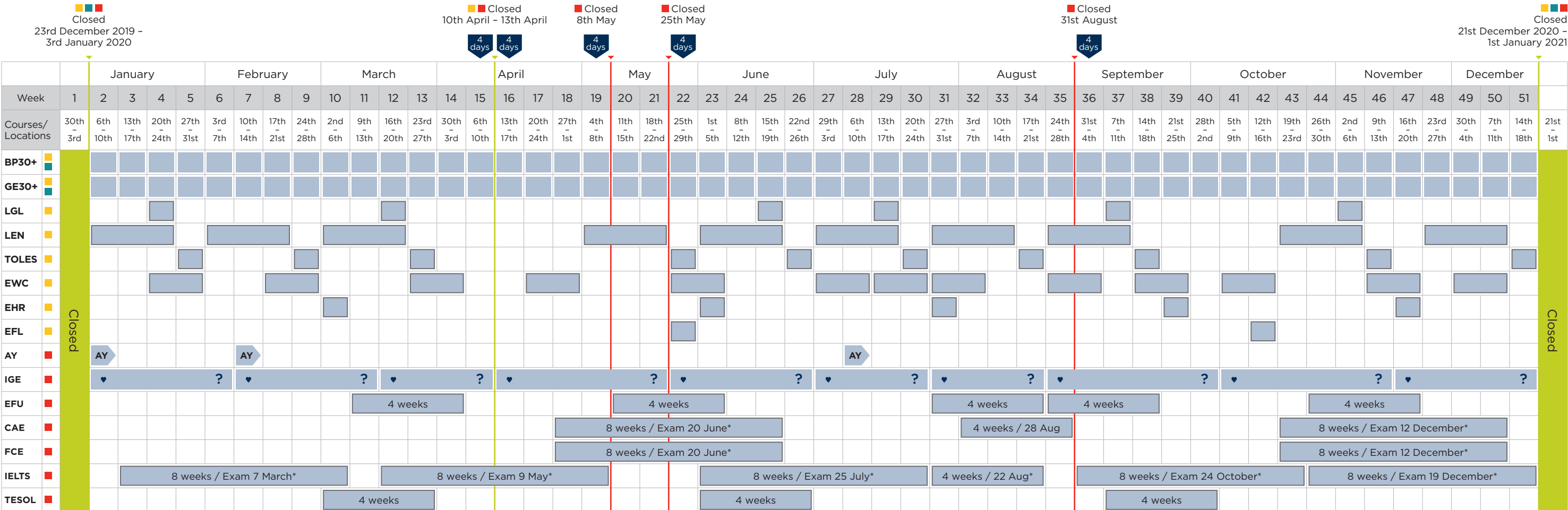
- 09.00-17.00 Holland Park Gardens, London
- 08.45-16.45 Westcroft Square, London
- 08.45-12.00 Canterbury

### Key to superscript numbers

- <sup>1</sup> English for Specific Purposes combination courses cover specialisms including: Business, Finance, Energy, Aviation, Medical, Lecturing Skills, Engineering. (See website for a full list.)
- <sup>2</sup> This is the standard rate from 08.00 to 19.00 Monday to Friday. See the website for out of hours rate.

- <sup>3</sup> A booking of 20 hours IND will start at 08:45 and finish at 13:00 including a 15-minute break.
- <sup>4</sup> Course finishes at 12:45 on Friday in London and at 12:00 on Friday in Canterbury.
- <sup>5</sup> Fees are rounded up to the nearest pound in this illustration.

# 2020 Course dates



Courses restart 4th January 2021

Christmas holiday: all centres are closed on the following dates: 21st December to 1st January 2021.  
 Easter holiday: London centres are closed on 10th April to 13th April. Canterbury centre remains open.  
 Other public holidays: Westcroft Square is closed. Holland Park Gardens and Canterbury centres remain open.  
 Individual Training is available on demand during holidays, subject to availability.

- Our locations**
- Holland Park Gardens
  - Westcroft Square
  - Canterbury

- Key**
- These courses have fixed start and end dates.
  - ♥ We recommend that you start IGE this week; it is the start of a new course block.
  - It's fine to join the course in this week.
  - ? Not a recommended start date, please enquire.
  - Academic Year recommended start dates (other start dates are possible).

\* Saturday exam

# Level scale

| Our scale | Description  | CEFR* levels |
|-----------|--|--------------|
| 9         | <b>Very advanced</b><br>I can speak fluently and understand completely.  | C2           |
| 8         | <b>Advanced</b><br>I speak and understand very well but sometimes have problems with unfamiliar situations and vocabulary.                             |              |
| 7         | <b>Pre-Advanced</b><br>I speak and understand well but still make mistakes and fail to make myself understood occasionally.                            | C1           |
| 6         | <b>Upper Intermediate</b><br>I can communicate without much difficulty but still make quite a lot of mistakes and misunderstand sometimes.             | B2           |
| 5         | <b>Intermediate</b><br>I can speak and understand reasonably well and can use basic tenses but have problems with more complex grammar and vocabulary. | B1           |
| 4         | <b>Low Intermediate</b><br>I can make simple sentences and can understand the main points of a conversation but need much more vocabulary.             |              |
| 3         | <b>Pre-intermediate</b><br>I can communicate simply and understand in familiar situations but only with some difficulty.                               | A2           |
| 2         | <b>Elementary</b><br>I can say and understand a few things in English.   | A1           |
| 1         | <b>Beginner</b><br>I do not speak any English.   |              |

\*Common European Framework of Reference  
For more information on levels, please visit:  
[www.londonschool.com/levels](http://www.londonschool.com/levels)

# Other fees

## London – Accommodation

| Silver Homestay* (shared bathroom)          | Single per week |
|---|-----------------|
| Bed & breakfast only                        | £185            |
| Bed & breakfast and 3 evening meals         | £225            |
| Bed & breakfast and evening meals every day | £270            |

| Gold Homestay* (private bathroom)   | Single per week |
|-------------------------------------|-----------------|
| Bed & breakfast only                | £260            |
| Bed & breakfast and 3 evening meals | £305            |

| Residence (Prince Consort*) | Up to 4 weeks | 5 weeks+  |
|-----------------------------|---------------|-----------|
| Standard Studio**           | £330          | £310/week |

\* £25 per week summer accommodation supplement applies from 28th June to 23rd August. \*\* Cleaning fee – £20 per stay.

## Canterbury – Accommodation

| Type   | Price           |
|--|-----------------|
| Silver homestay: b&b and 3 evening meals       | £165/week       |
| Platinum homestay: b&b and daily evening meals | £350/week       |
| Hotel accommodation                            | from £100/night |
| Apartments                                     | from £400/week  |

Accommodation is bookable in blocks of Sun-Sun for Prince Consort Village residence and for homestay. Dietary intolerances or special requirements (homestay only) – £20 per week.

## London and Canterbury – Other fees

| Type                        | Price            |
|-----------------------------|------------------|
| Registration fee            | £80 (£40 online) |
| Accommodation placement fee | £60              |

### Terms and conditions

For information on payment terms, changing, postponing or cancelling your booking, please visit [www.londonschool.com/terms](http://www.londonschool.com/terms)

## Transfers

### London Transfers

#### From / to all London airports:

|  |      |
|--|------|
| Arrival (including meeting in arrivals hall) | £100 |
|--|------|

|                           |     |
|---------------------------|-----|
| Departure (drop-off only) | £90 |
|---------------------------|-----|

#### From / to St Pancras Eurostar terminal:

|         |     |
|---------|-----|
| Arrival | £65 |
|---------|-----|

|                           |     |
|---------------------------|-----|
| Departure (drop-off only) | £55 |
|---------------------------|-----|

### Twin Centre Transfers

Transfer between Canterbury and London homestays can be arranged.

### Canterbury Transfers

#### From / to all London airports:

|  |      |
|--|------|
| Arrival (including meeting in arrivals hall) | £135 |
|--|------|

|                           |      |
|---------------------------|------|
| Departure (drop-off only) | £125 |
|---------------------------|------|

#### From / to Ashford International Eurostar:

|         |     |
|---------|-----|
| Arrival | £60 |
|---------|-----|

|                           |     |
|---------------------------|-----|
| Departure (drop-off only) | £50 |
|---------------------------|-----|

### All UK courses include:

- ▶ All course materials
- ▶ London School Online access with 150 hours content
- ▶ End of course report
- ▶ Lunches
- ▶ Networking reception
- ▶ Social programme activities



# Bespoke corporate training

Your training partner for all your English and communications needs

Whether you need immersion training in closed groups at our schools, in-company training where you are located, individual and group training or virtual and online English, we can support you.

We have over 100 years of experience in providing training to renowned international corporations and public sector organisations.

If you work across borders and cultures we can help you to develop the skills to build successful relationships, avoid making mistakes and maximise the benefits of working internationally.

We design and deliver customised training based on your unique needs and offer a full range of flexible learning solutions, for example:

- ▶ Global leadership development
- ▶ Intercultural assessment and training
- ▶ Online English language testing and recommendations
- ▶ English language training
- ▶ International communication and negotiations skills
- ▶ Virtual team training

## Corporate client testimonial quotes:

‘We’ve delivered and proved a training model that works well which we can now implement where needed with confidence.’

*Simon Youngs,  
Group Head of Talent & Learning, Coats*

‘This was our first interactive virtual training and I thought it was excellent, pitched at the right level and our trainer took time to listen, observe and interact with the group. I’ve had really positive feedback from attendees as well. Thoroughly enjoyed it!’

*Krista Long,  
Service Centre Director, Civa*

## Customer reviews

With over 1000 reviews, our clients give us an average score of 9.6 out of 10.



**Accreditations:**  
ISO 9001:2015  
CERTIFIED

Accredited by the  
**BRITISH COUNCIL**  
for the teaching  
of English in the UK

**THE LONDON SCHOOL GROUP**



## Contact us

By email:

[sales@londonschool.com](mailto:sales@londonschool.com)

By telephone:

+44 20 7605 4142

(Sales enquiries only)

+44 20 7605 4123

(All other enquiries)

Lines are open

Monday – Friday,  
08.30 – 17.30 UK time

On live chat:

[www.londonschool.com](http://www.londonschool.com)

Discuss options for yourself  
or your client with our  
helpful sales team:  
[www.londonschool.com/  
salesteam](http://www.londonschool.com/salesteam)



[www.londonschool.com](http://www.londonschool.com)

# It's what our customers say that really matters...



Excellent 9.6/10



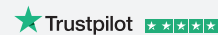
Based on 1075 reviews

The highest ranked English language school  
on Trustpilot as of August 2019

### One week at the London School of English.

High interest and efficiency of the courses: a very small group and a lot of interactions. Everything I wanted has come true! Great satisfaction with the welcome by the team, the meals, the atmosphere. Everything is done to feel good.

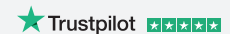
*Christine, August 2019*



### Incredible experience.

I stayed 6 months to improve my English. I did intensive general English, business courses and IELTS preparation (8 weeks). The staff and the teachers were amazing and there was students from all around the world in every classroom. In addition, IELTS course was crucial for the real exam. This course pushed me to get a higher score. As a result, I recommend this school if you want to improve quickly your level with supportive and helpful teachers.

*Lisa, August 2019*



[www.londonschool.com/testimonials](http://www.londonschool.com/testimonials)

## Your experience and our expertise

- ▶ Over 100 years' experience of providing training for adults
- ▶ Highly experienced and flexible trainers
- ▶ Small class sizes with courses tailored to age, needs and interests
- ▶ Attention to detail from all our staff – an outstanding and memorable experience
- ▶ Safe, beautiful locations in two wonderful English cities

## Our unique selling points

- ▶ The world's oldest accredited English language school, established in 1912
- ▶ The highest Trustpilot rating of any English language school in the world
- ▶ Mature, self-motivated adults developing lasting business and personal connections
- ▶ Relevant and practical courses
- ▶ Adults 18+, average age range mid 20s to early 40s
- ▶ Carefully selected premium accommodation options

Accredited by the



for the teaching  
of English in the UK

