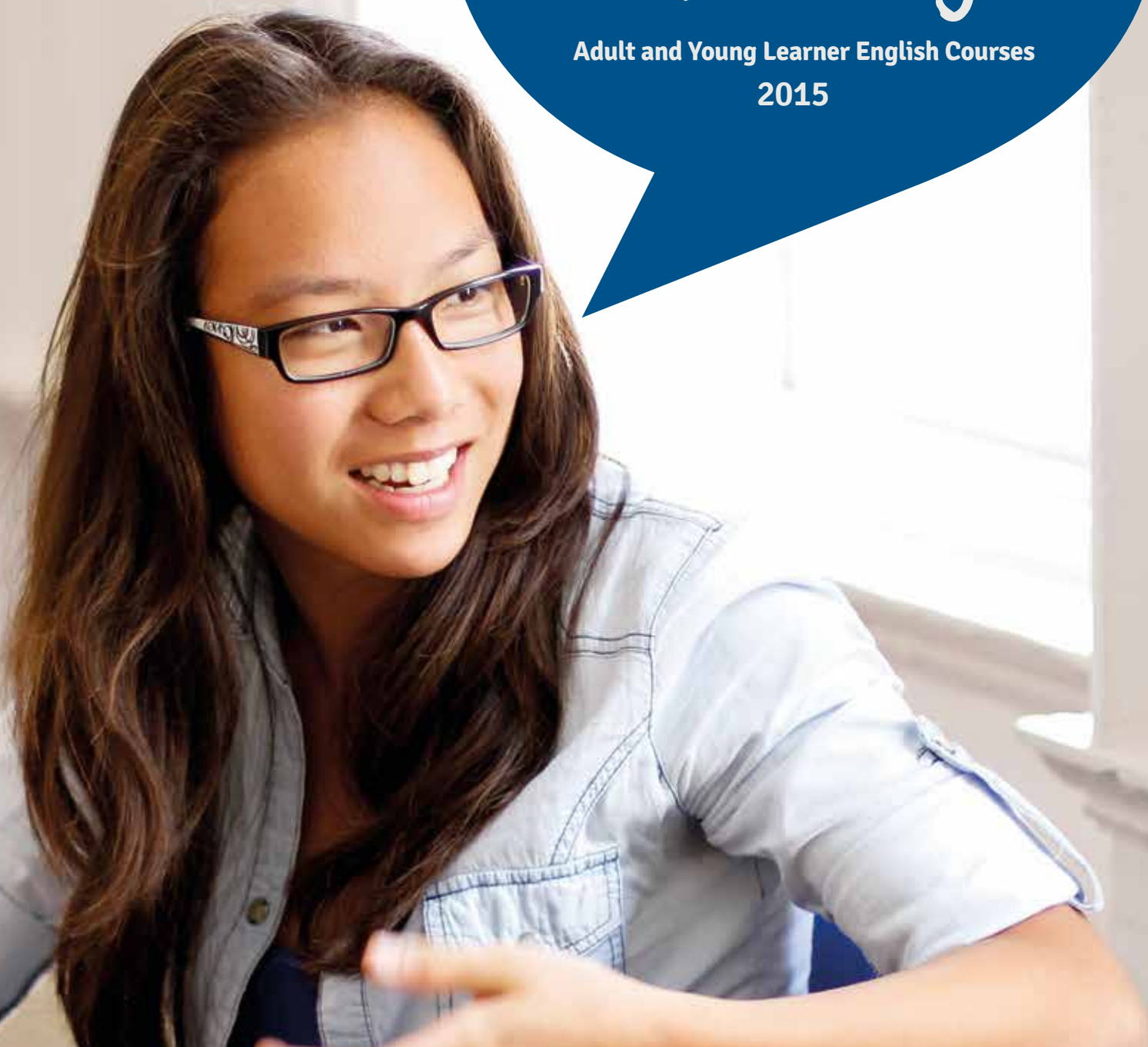


Experience 
English

Life changing learning

Adult and Young Learner English Courses
2015



Life changing learning

We believe **language learning** goes way beyond the classroom and we are **dedicated to immersion** in the **culture** and **environment** behind the language, as well as teaching it.



Experience English is a collection of high-quality schools in four of the **UK’s most outstanding locations**. We believe in offering a style of language learning that extends far beyond the classroom and immerses you in the history, culture and life of each destination. We believe that learning English in the UK will open up your world through a **life changing experience**.

Our locations

Our schools and Young Learner centres are located in some of the most renowned and exceptional cities of England and Scotland which play a crucial role in making your time with us unforgettable. We immerse you in the UK’s rich heritage through carefully designed academic and social programmes and excursions.

Our way of learning

Our schools aim to provide you with the highest levels of academic excellence and our accreditations are testament to that. In addition to excellent facilities, our academic teams have the qualifications, dedication and experience to get the best out of you, delivering communicative and student-centred learning. We offer weekly progress testing, tailor-made learning plans, individual tutorials and online support to ensure you excel.

Cultural immersion

We are dedicated to making your time in the UK exciting, inspiring and rewarding, as well as educational. A varied social programme will provide you with the inspiration to focus and consolidate your learning. This ensures you will be able to make the most of your learning experience outside the classroom. And as our schools are situated in historic areas, you will be immersed in British history and culture from your first day.

Our team

We not only strive to deliver exceptional academic quality and support, but our team are also passionate about their cities and are always willing to share their local knowledge. Whether it’s organising social events and excursions with other students, or helping you plan an itinerary of the sights, our staff are committed to making your stay in the UK as enriching as possible.

Student support

Our support and expertise is not just limited to your time in class. Contact us or speak to a local agent for advice on your choice of location and course. Our online Student Zone allows you to complete a pre-course test so we can place you in a class that’s right for you. When you arrive we will further assess your skills so we can be sure that you are at a level that suits you. After receiving your certificate at the end of your course, we will guide you towards the next step of your English language learning.



Contents

Introduction	04
Adult Courses:	
Hampstead School of English	06
Manchester Academy of English	10
English Language Centre York	14
Edinburgh Language Centre	18
Young Learner Courses:	
Introduction	22
Overview	24
King’s College, London Bridge	26
Hampstead School of English	27
Reed’s School, Cobham	28
Manchester Academy of English	29
English Language Centre York	30
Edinburgh Language Centre	31
Edinburgh College (Telford Campus)	32
Terms and Conditions	34



Hampstead School of English

Hampstead School of English is a great place to learn English, with a range of courses and facilities situated in an ideal location. Our students enjoy excellent levels of personal care and attention from committed and dedicated staff.



A total of
54 nationalities

Data based on the number of individual students from 1 October 2013 – 30 September 2014, excluding closed groups and Young Learner courses

Key Facts

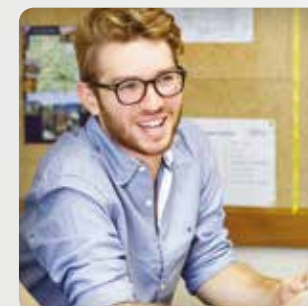
- ✓ One of London's premier English language schools, established in 1977
- ✓ Only 30 minutes from the city centre
- ✓ Located in one of London's most desirable boroughs
- ✓ Intensive and specialist courses
- ✓ Nearby homestay and self-catering accommodation
- ✓ Great facilities, including outdoor patios



What courses can I take?

- General English
- Combination courses (General English plus electives from Academic English, Business English, IELTS, TOEIC, TOEFL)
- Study Year (long term courses)
- Cambridge Exam Preparation (FCE, CPE, CAE)
- University Preparation
- Special Interest courses (Language in London, Teacher Immersion)
- Professional courses (e.g. insurance, legal, engineering, financial, medical)
- Private tuition

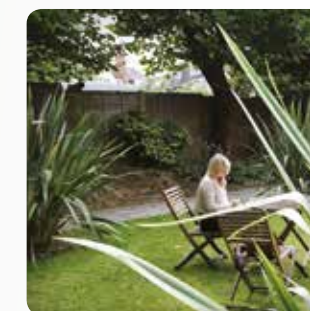
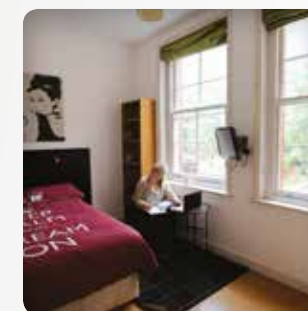
Check out the full range of courses at www.experienceenglish.com/our-courses.



What are the school's facilities?

- Wi-Fi available throughout the school
- Student coffee room
- Canteen serving hot food and sandwiches
- Two outdoor garden patios
- Library and study centre

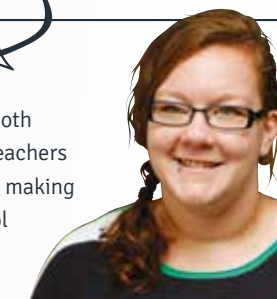
Experience English



Testimonial

Anni, Sweden

The classes I've taken have been both educational and interesting. All teachers and staff have been really helpful, making the whole experience at the school very pleasant and enjoyable.



Where can I stay?

Homestay

Immerse yourself in London life with a local homestay host

- Up to 45 minutes from the school
- Facilities include shared or private bathroom, access to a study desk, living room and TV
- Meals provided on a bed-and-breakfast or half-board basis
- Internet access is available in some homestay accommodation

Studios

Stay in your own single en-suite studio apartment for complete independence

- 5 minutes from the school on foot
- Facilities include a private or shared kitchen (self-catering), en-suite bathroom, bed, shared washing machine facilities, TV and Internet access, a communal garden and CCTV entrance

Your **Hampstead** Experience

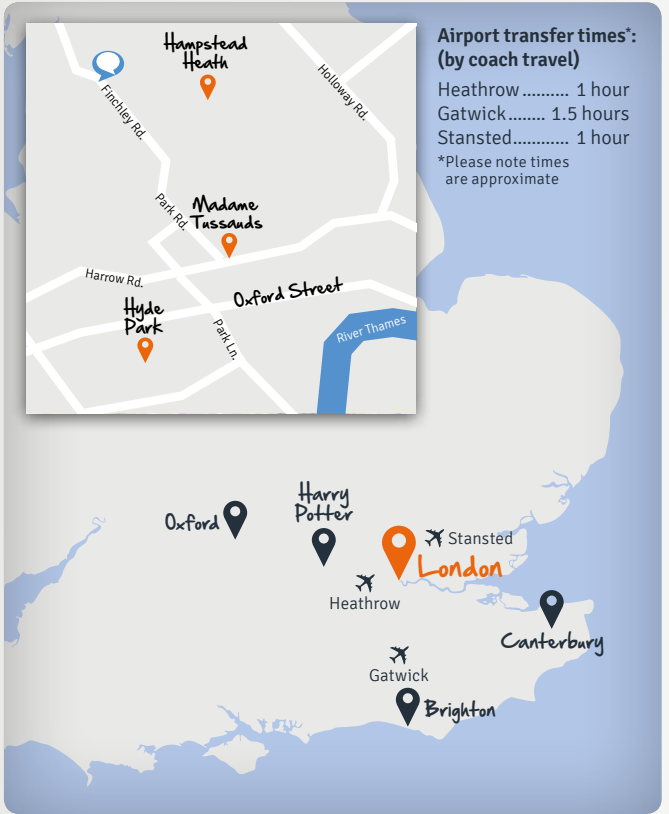


Unmistakably British

Hampstead is situated in the Borough of Camden in London, one of the most desirable and cosmopolitan cities in the world. Filled with culture, history and classic landmarks, your Hampstead experience will be both truly international and unmistakably British.

Did you know?

- During the 17th and 18th centuries Hampstead became famous for its clean air and waters, believed to have medicinal qualities
- The local Hampstead area has been home to Dame Judi Dench, Jude Law, Russell Crowe, Tim Burton, Hugh Grant, Brad Pitt, Emma Watson, and Jamie Oliver among others
- Hampstead is one of the greenest areas in London with Hampstead Heath, Regent's Park, Parliament Hill and Primrose Hill
- London's 'Big Ben' refers to the bell, not the clock tower



Airport transfer times* (by coach travel)
Heathrow 1 hour
Gatwick 1.5 hours
Stansted 1 hour
*Please note times are approximate

Social Activities

The school organises an exciting and varied social programme giving you the chance to socialise and discover London outside of academic studies.

- Cultural events
- Pub nights
- Discounted musical tickets in London's famous West End
- Offers on tickets to some of London's best clubs
- Academic workshops



Where can I visit near **London**?*

- Brighton (1.5 hours)
- Canterbury (1.5 hours)
- Oxford (1.5 hours)
- Cambridge (1.5 hours)
- Windsor Castle (1.5 hours)
- Portsmouth (2 hours)
- Stonehenge (2 hours)
- Paris (2.5 hours)

*Please note times are approximate and based on public transport times

Testimonial

Mariano, Italy

I've met people from all over the world, from many different cultures.



Manchester Academy of English

Located in the centre of one of the UK's most cosmopolitan cities, **Manchester Academy of English** is the perfect place to study English whilst experiencing life in a lively and exciting British location. The so-called 'Capital of the North' boasts a great sports and music scene as well as being home to BBC and ITV's 'Media City'.

Key Facts

- ✓ Established in 1991, it is the longest-established private English language school in the city
- ✓ Located in a beautiful Victorian building, in the centre of the city
- ✓ Renowned as a centre of excellence in teacher training
- ✓ A wide range of English courses and a CELTA training centre
- ✓ Social activities led by Experience English staff
- ✓ Over 60 nationalities welcomed in 2014



What courses can I take?

- General English
- Combination courses (General English plus electives from Business English, IELTS, TOEIC, TOEFL)
- Study Year (long term courses)
- Cambridge Exam Preparation (FCE, CPE, CAE)
- University Preparation
- Special interest course (Teacher Immersion)
- Private tuition

Check out the full range of courses at www.experienceenglish.com/our-courses.



What are the school's facilities?

- Large student lounge with table football, Xbox and plasma screen TV
- Coffee and vending machines
- Wi-Fi available in specific areas
- Computer and resource room

Experience English



Testimonial

Antonella, Italy

I received lots of helpful advice from members of staff to make sure I chose the most appropriate classes to suit my needs for my four weeks of studies.



Where can I stay?

Homestay

Immerse yourself in Mancunian life with a local homestay host

- Up to 45 minutes from the school by bus
- Facilities include shared or private bathroom, study desk, washing machine, living room and TV
- Meals provided on a half-board or full-board basis
- Internet access is available in most homestay accommodation

Student Residence

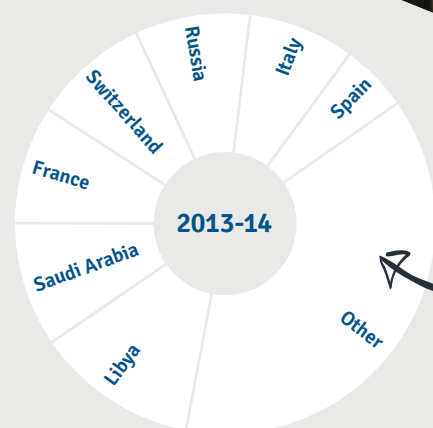
Live in a university flat with five other students whilst enjoying your own independence

- 10 minutes from the school on foot
- Facilities include en-suite bedroom, study desk, access to washing machines, living room, kitchen (self-catering), Internet and TV

Student House

Live in a shared house with fellow students for independence and a real international experience

- 15 minutes from the school by bus
- Facilities include shared or en-suite bedrooms, study desk, access to washing machines, kitchen (self-catering), common room, Internet and TV



A total of 61 nationalities

Data based on the number of individual students from 1 October 2013 – 30 September 2014, excluding closed groups and Young Learner courses

Your Manchester Experience



Capital of the North

Alive with music venues, theatres, art galleries, shopping and sports, Manchester is one of the largest, most dynamic and multi-cultural cities in the UK.

Did you know?

- With a vibrant music scene, it has produced the likes of Oasis, The Stone Roses, Elbow, The Doves, Chemical Brothers, Morrissey and Badly Drawn Boy, to name a few!
- In 2013 it was voted the 'Best UK City to Live In' (Global Liveability Survey)
- The first Rolls Royce was built here in Manchester in 1904
- Director and producer of the London 2012 Olympic Opening Ceremony, Danny Boyle, was born near Manchester
- In 1888, Football club representatives met in Manchester and created the Football League, a professional football competition and predecessor of the Premier League



Social Activities

The school organises an exciting and varied social programme giving you the chance to socialise and discover Manchester outside of academic studies.

- Indoor skiing at Chill Factor
- Manchester City Stadium Tour
- Museum of Science and Industry
- Cultural museums and galleries
- Velodrome indoor Olympic cycling track
- Theatre trips
- Football matches
- Salford Quays
- Media City



Experience English



What can I visit in and around Manchester?*

- Heaton Park (40 minutes)
- Old Trafford Stadium (30 minutes)
- Leeds (1 hour)
- Liverpool (1 hour)
- Blackpool (1.5 hours)
- The Lake District National Park (1.5 hours)

*Please note times are approximate and based on public transport times

Testimonial

Loic, France

What I've enjoyed most about my experience is the sharing of different cultures.



English Language Centre York

Situated in a beautiful Georgian building in the heart of York, **English Language Centre York** is a great place to study English whilst immersing yourself in one of England's most charming and atmospheric cities.

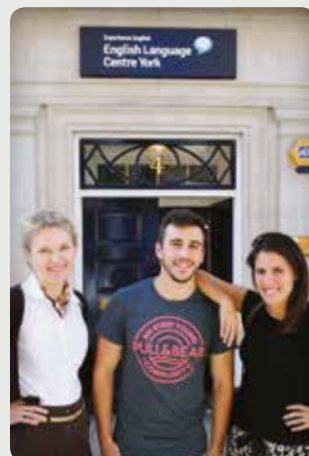


A total of 51 nationalities

Data based on the number of individual students from 1 October 2013 – 30 September 2014, excluding closed groups and Young Learner courses

Key Facts

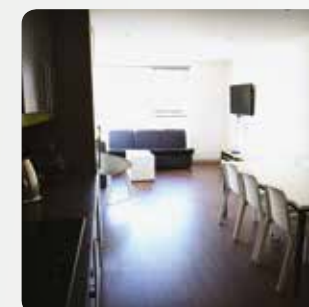
- ✓ Established in 1997
- ✓ Located in the centre of picturesque York
- ✓ Lovely facilities, including an outdoor courtyard
- ✓ A wide range of English courses and a CELTA training centre
- ✓ Social activities led by Experience English staff



What courses can I take?

- General English
- Academic English
- Combination courses (General English plus electives from Business English and IELTS)
- Cambridge Exam Preparation (FCE, CAE)
- University Preparation
- Special Interest courses (English for 50+, English with Historic Homes and Gardens, Teacher Immersion)
- Private tuition

Check out the full range of courses at www.experienceenglish.com/our-courses.



What are the school's facilities?

- Student common rooms
- Outdoor courtyard
- Library and study area
- Wi-Fi available in specific areas
- Multi-media centre

Experience English



Where can I stay?

Homestay

Immerse yourself in York life with a local homestay host

- 15 – 30 minutes from the school by bus
- Facilities include shared bathroom (several private facilities available), study desk
- Meals provided on a half-board or full-board basis
- Internet access is available in most homestay accommodation

Student Residence

Live in a flat with other students whilst enjoying your own independence in our new residence, The Boulevard

- 20 minutes from the school on foot
- Facilities include private shower room for each bedroom, study desk, access to laundry facilities, fully-equipped kitchen (self-catering) and Internet access

Testimonial

Anas, Libya

It has to be my instant love for the city of York and its people that has made my stay enjoyable. I am very pleased with my progress in learning English thanks to high quality teaching and techniques. My favourite memory has been making friends from around the world.



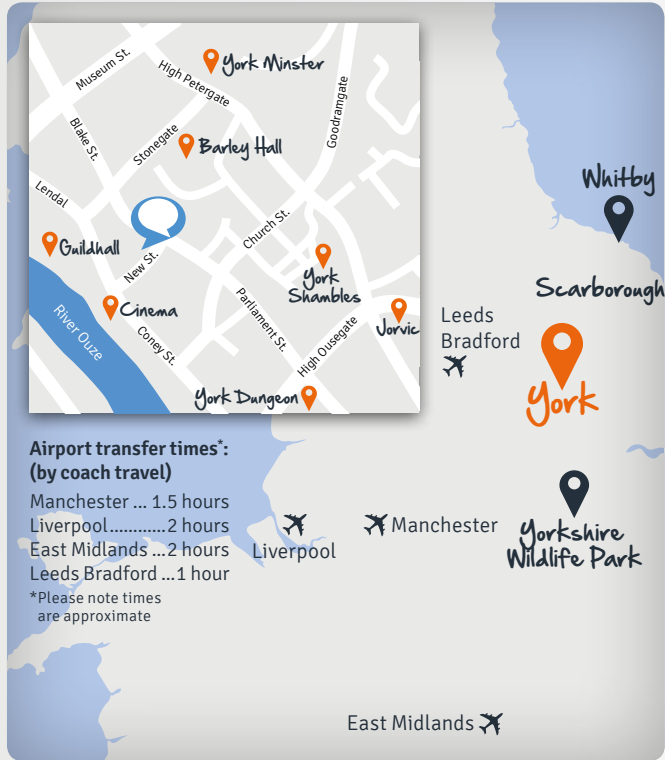


Full of history and heritage

Compact, safe and friendly, York is a medieval city bursting with tales of the past. Enjoy the characteristic shops along the Shambles or stand at the magnificent entrance of York Minster, immersing yourself in the history and culture of beautiful Northern England.

Did you know?

- York is considered to be one of the world's most haunted cities. There are an estimated 500 ghosts in the city, including those of Roman soldiers
- The Shambles is believed to be the oldest shopping street in Europe, even mentioned in the Domesday Book of 1086
- York Minster is one of the world's largest cathedrals
- The infamous Guy Fawkes was born in York, and a plaque on the wall in Stonegate commemorates his birth
- York has been a Fairtrade City since 2004



Social Activities

The school organises an exciting and varied social programme giving you the chance to socialise and discover York outside of academic studies.

- Museums
- Cinema trips
- Theatre
- Pub nights
- Live music nights
- Restaurant trips



Where can I visit near York?*

- The Yorkshire Dales (1.5 hours)
- Whitby (2.5 hours)
- Yorkshire Coast - Scarborough (50 minutes)
- Howardian Hills (1.5 hours)
- London (2 hours)
- Edinburgh (2.5 hours)

*Please note times are approximate and based on public transport times

Testimonial

Bettina, Switzerland

I enjoy the lovely city of York with the famous minster, the museum garden, the nice streets and beautiful stores. I spend a lot of time with other students from different classes, ages and nationalities.



Edinburgh Language Centre

Located in the heart of one of the UK's most beautiful and historic cities, **Edinburgh Language Centre** is a great location to develop your language skills whilst enjoying a rich cultural heritage.

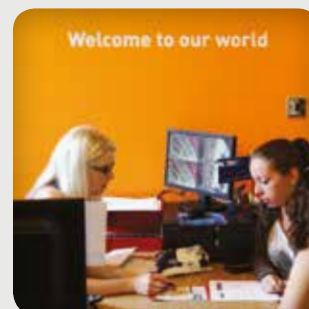


A total of 41 nationalities

Data based on the number of individual students from 1 October 2013 – 30 September 2014, excluding closed groups and Young Learner courses

Key Facts

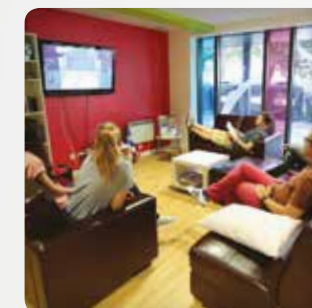
- ✓ Established in 2002
- ✓ Beautiful Georgian building
- ✓ Located in the city centre
- ✓ Great views of Edinburgh Castle
- ✓ Dedicated Executive Training Centre
- ✓ Social activities led by Experience English staff
- ✓ Used as a Fringe venue for the first time in 2014



What courses can I take?

- General English
- Combination courses (e.g. General English plus electives from Business English and IELTS)
- Study Year (long-term courses)
- Cambridge Exam Preparation (FCA, CAE)
- University Preparation
- Executive English courses
- Special Interest courses (English for 50+, English at the Edinburgh Festivals, Teacher Immersion)
- Private tuition

Check out the full range of courses at www.experienceenglish.com/our-courses.



What are the school's facilities?

- Wi-Fi available in specific areas
- Student common room
- Vending and coffee machines
- Library and study area

Experience English



Testimonial

Simone, Switzerland

I've been in Edinburgh for six months and it has been one of the best experiences of my life. The city is wonderful and the school is amazing, great teachers and fantastic people. I would really recommend Edinburgh to anyone.



Where can I stay?

Homestay

Immerse yourself into Edinburgh life with a local homestay host

- 15 – 45 minutes from the school by bus
- Single rooms
- Facilities include shared or private bathroom, study desk, washing machine, living room
- Meals provided on a bed-and-breakfast or half-board basis
- Internet access is available in some homestay accommodation
- Private bathrooms and twin rooms also available

Student Residence

Live with other students whilst enjoying your own independence

- 30 minutes from the school on foot
- Facilities include en-suite bathroom, study desk, washing machine, living room, kitchen (self-catering) and Internet access

Your **Edinburgh** Experience

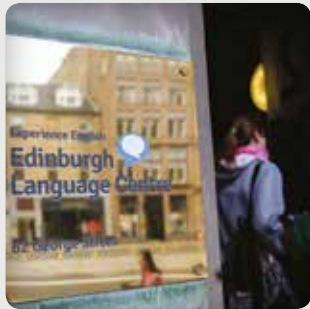


Scotland's Capital City

Edinburgh is a breath-taking hub of cultural and historic activity, a beautiful panorama of chimney tops, sea and green hills. Every August it becomes home to the world-famous Edinburgh Festivals, revelling in music, theatre, comedy and the arts.

Did you know?

- In 1995 the historic Old Town and neoclassical New Town were designated a UNESCO World Heritage Site
- Edinburgh is also known as 'Auld Reekie' because of the smoke that covered the city in the past
- The 'Elephant House' café is where JK Rowling started to write her first famous novel 'Harry Potter and the Philosopher's Stone'
- There are over 4,000 protected historic buildings in the city



Social Activities

The school organises an exciting and varied social programme giving you the chance to socialise and discover Edinburgh outside of academic studies.

- National museums
- BBQs in the park
- Calton Hill
- Edinburgh Castle
- Theatre trips
- Ghost tours
- Restaurant and pub nights



Experience English



What can I see in Scotland?*

- Stirling Castle and Wallace Monument (1 hour away)
- Loch Lomond (1 hour)
- Glasgow (1 hour)
- Highlands and Islands (3 hours)
- St Andrews (2 hours)
- Aberdeen (3 hours)

*Please note times are approximate and based on public transport times

Testimonial

Boram, Korea

I've been here for six months, I've had a brilliant time with friends and teachers
- I live alone here but they feel like my family. We have different nationalities but share our cultures
- I enjoy life in Edinburgh.





Young Learners

Welcome to our Young Learner programmes

Our dedicated team encourage you to enjoy the rich culture and heritage that each one of our summer centres has to offer; from carefully designed academic and social programmes to excursions and learning outside the classroom. We aim to deliver academic excellence by using the expertise built from years of experience and to make your stay with us the start of a journey that lasts a lifetime.

Young Learners EXPERIENCE

This course is for you if you:

- Want to improve your general English
- Want to have fun doing activities with new friends
- Like to have a mix of activities, sports and sightseeing
- Are of any level in English

Young Learners INTENSIVE

This course is for you if you:

- Want to get a greater level of academic attainment
- Want to use your English in discussion, debates and role play exercises
- Want to improve through practical application rather than just classroom learning
- Want to learn about the local culture and heritage
- Prefer sightseeing to activities and sports
- Are of at least a level B1 in English

Young Learners CULTURE

This course is for you if you:

- Want to improve your general English
- Want to practise your English around the city you are staying
- Want to learn about the local culture and heritage
- Prefer sightseeing to activities and sports
- Are of any level in English

Young Learners SPORTS

This course is for you if you:

- Want to improve your general English
- Want to improve your ability in a particular sport
- Are of any level in English



Why Experience English?

Student Welfare

The welfare of our students is our priority. We are members of Young Learners English UK which works hard to raise the standards of all UK junior vacation courses.

In accordance with British Council guidelines and our own welfare policies, all residential students are supervised at all times and you are not permitted to leave the centre without a member of our staff or their group leader (with prior permission).

If you are in Homestay accommodation, you will travel by public transport. Our team or your group leader will assist and accompany you where possible. After evening activities, you will travel in small groups in pre-ordered taxis back home.

Accommodation

Homestay: In certain centres you may choose to stay in homestay accommodation with carefully selected local hosts. You will normally eat two meals a day with your host, and will usually share a room with one other international student. A limited number of single rooms are available on request (at a supplement).

Residences: We offer residential accommodation in a variety of university campuses and private boarding schools. Standard rooms will share bathroom facilities and typically range from two to six beds, in a traditional boarding school environment. En-suite rooms are available in some locations and will normally be single rooms.

Our summer programmes

We provide a full daily programme for all students, encouraging you to speak English throughout the day. Our excursions and activities are designed with a learning objective in mind, showcasing the best of UK history and culture. You participate in a full seven day programme (six in homestay centres).

Guided Learning

- Teachers hold a CELTA or equivalent qualification
- Lessons to develop communication skills and confidence, especially through speaking and listening
- Mixed nationality classes to encourage English speaking and improve your understanding of other cultures
- Weekly group projects, based around specific tasks
- Testing on arrival so you are organised into classes. On completion, you will be presented with a certificate which uses the Common European Framework of Reference (CEFR) to highlight progress
- Preparation for the Trinity GESE examination; you will take the exam towards the end of your stay



What to expect from our courses

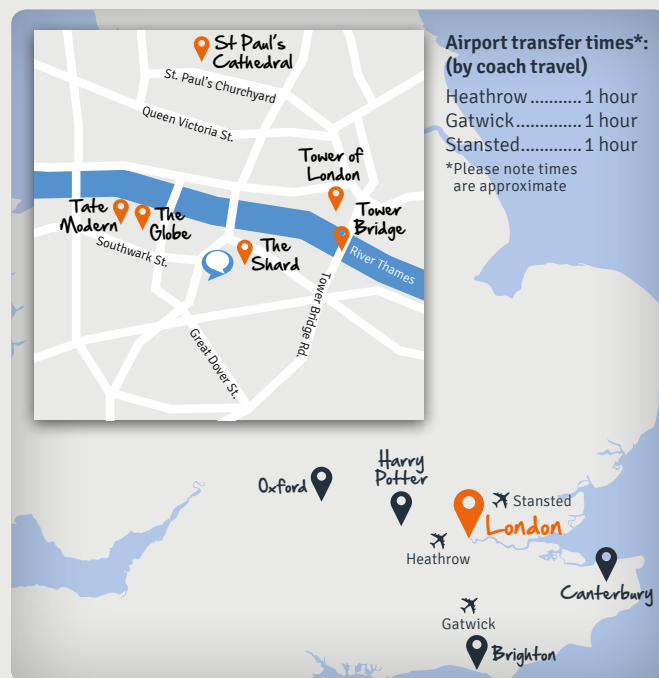
- Courses for 9 – 17 year olds, depending on centre*
- 15 hours of English language tuition a week (Intensive Course is 21 hours)
- Maximum of 15 students per class, normally in mixed nationality classes
- Trinity preparation and examination during your stay
- End of course certificate and academic report
- Full board accommodation in residences or homestay
- One full-day excursion per week on all courses
- Minimum one half day excursion per week
- Full evening activity programme (up to 3 nights per week for homestay accommodation**)

*Please note that age restrictions and conditions apply. In some centres over 18s may be present on junior courses in closed groups; adult students may also be present within the same teaching building. ** The number of nights provided to those in Homestay accommodation differs between centres. Please refer to our website or ask on registration.



King's College, London Bridge

King's College, London Bridge offers you the opportunity to discover one of the greatest and most exciting cities in the world, staying in the heart of London's central zone. The centre offers high quality teaching facilities at Kings College London and daily excursions in and around London.



Airport transfer times*:
(by coach travel)
Heathrow 1 hour
Gatwick 1 hour
Stansted 1 hour
*Please note times are approximate

Essential Information

Full 7-day programme
Activities and cultural excursions
Central London (Zone 1)
Leading university campus
Residential accommodation
Trinity GESE spoken exam



College Address:	Guy's Campus, King's College London, London, SE1 1UL
Centre type:	University Campus
Accommodation:	Residential
Capacity:	320
Age range:	12 – 17*
Arrival day:	Sunday
Course start dates:	28 June; 5, 12, 19, 26 July; 2, 9 August**

*Individual students must be 14 years of age; courses for students up to the age of 20 years old may be available on selected dates. **Please note start dates for individual students (rather than groups) are 28 June; 5, 12, 19, 26 July; 2 August.

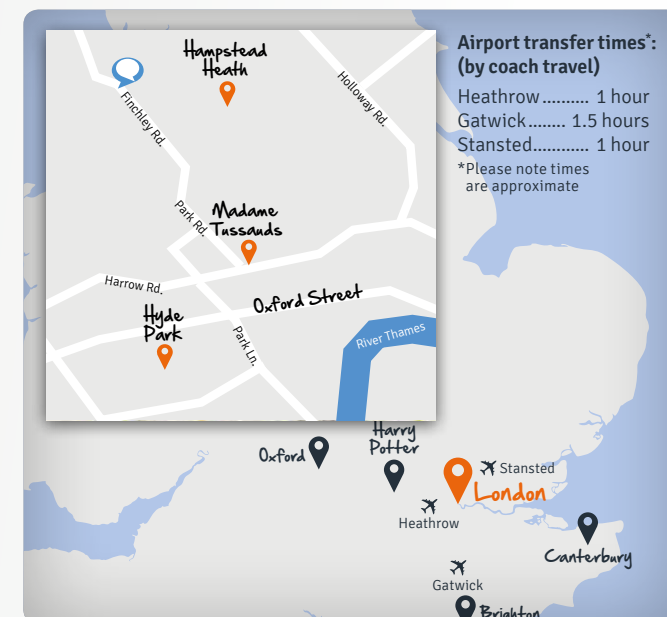
Hampstead School of English

Hampstead is one of London's best-preserved old villages and is also within walking distance of the ancient park of Hampstead Heath. With its peaceful setting, it is the perfect location to study English whilst exploring Britain's vibrant capital.



Essential Information

6-day programme
Cultural excursions
30 minutes to central London
Homestay accommodation
Trinity GESE spoken exam
Classes held **on-site** or at a **local annexe**



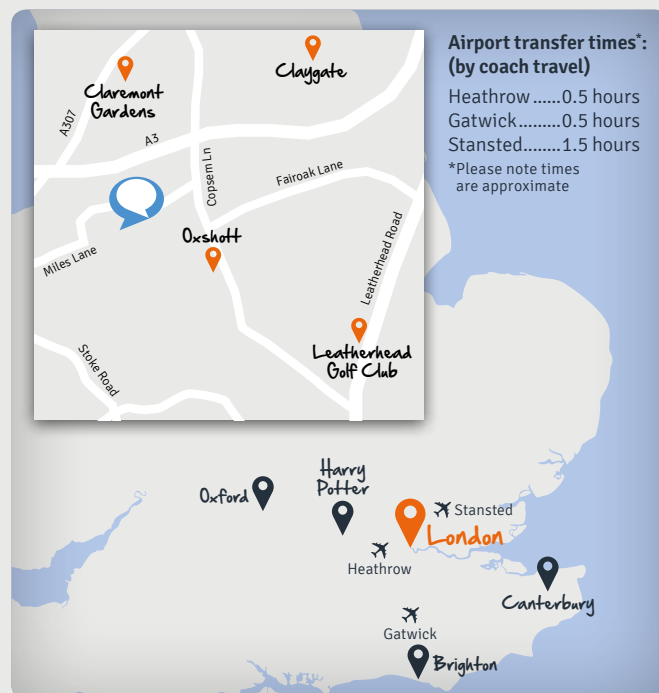
Airport transfer times*:
(by coach travel)
Heathrow 1 hour
Gatwick 1.5 hours
Stansted 1 hour
*Please note times are approximate

College Address:	Hampstead School of English, 553 Finchley Road, London, NW3 7BJ
Centre type:	Year round school with classes held on-site or local annexe
Accommodation:	Homestay
Capacity:	100
Age range:	14 – 17*
Arrival day:	Sunday
Course start dates:	28 June; 5, 12, 19, 26 July; 2, 9, 16, 23 August

*Please note that age restrictions and conditions apply. Please ask on registration for further details. Individual students must be over the age of 14. Lessons may also be taught off site dependent upon student numbers. Adult students will also be present in the school.

Reed's School, Cobham

Reed's School, Cobham, is a traditional English boarding school only forty minutes by train from London's busy city centre. This rural school is one of our most popular language centres and offers a fantastic range of sports facilities, including many tennis courts, an indoor swimming pool and AstroTurf pitches – which make it a perfect base for our Experience Sports programme.

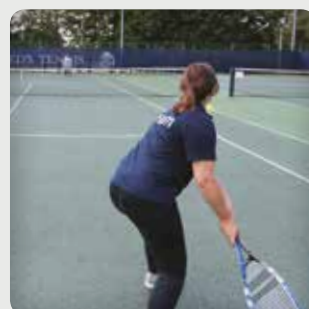


College Address:	Reed's School, Sandy Lane, Cobham, Surrey, KT11 2ES
Centre type:	Traditional boarding school
Accommodation:	Residential
Capacity:	200
Age range:	9 – 16*
Arrival day:	Sunday
Course start dates:	12, 19, 26 July; 2, 9 August**

*Please note that age restrictions and conditions apply. **Please note start dates for individual students (rather than groups) are 12, 19, 26 July.

Essential Information

Full 7-day programme
Rural English boarding school
40 minutes from London by train
Trinity GESE spoken exam
Outstanding sports facilities



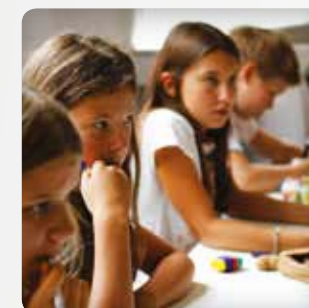
Manchester Academy of English

Manchester is one of the most exciting cities in the UK. Our Manchester school has been offering English language courses since 1991 and aims to provide academic quality and support. The summer school works in partnership with Manchester University who provide the residential accommodation.



Essential Information

Central Manchester
6 and 7 day programmes
Activities and cultural excursions
Homestay and residential accommodation
Trinity GESE spoken exam
Hot lunches



College Address:	Manchester Academy of English, St. Margaret's Chambers, 5 Newton St, Manchester, M1 1HL
Centre type:	City centre all year round school with university residence
Accommodation:	Residential or homestay
Capacity:	220 (120 residential; 100 homestay)
Age range:	10 – 17*
Arrival day:	Sunday
Course start dates:	28 June; 5, 12, 19, 26 July; 2, 9, 16, 23 August

*Please note that age restrictions and conditions apply. Please ask on registration for further details. Individual students must be over the age of 12. Lessons may also be taught off site dependent upon student numbers. Adult students will also be present in the school.

English Language Centre York

Situated in a beautiful Georgian setting, the English Language Centre York offers you the opportunity to enjoy studying in a traditional English environment whilst meeting students from across the world. The magical city of York is a great place for you to discover. York is a small and safe city and the school is just a short distance from the famous historic landmarks.



Essential Information

6-day programmes
Cultural excursions
Beautiful Georgian building
Central York – small and safe city
Homestay accommodation
Trinity GESE spoken exam



College Address:	English Language Centre, York, 5 New Street, York, YO1 8RA
Centre type:	City centre school
Accommodation:	Homestay
Capacity:	150
Age range:	12 – 17*
Arrival day:	Sunday
Course start dates:	28 June; 5, 12, 19, 26 July; 2, 9, 16, 23 August

*Please note that age restrictions and conditions apply. Please ask on registration for further details. In this centre, over 18s might be present on junior courses in closed groups.

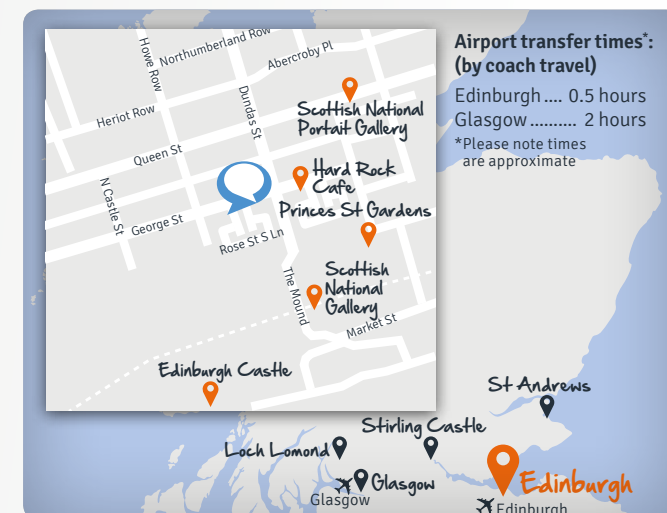
Edinburgh Language Centre

Studying in Edinburgh gives you the opportunity to learn more about the city's historical attractions, as well as visit other important destinations in Scotland. Edinburgh Language Centre is housed in the elegant surroundings of Edinburgh's New Town – close to the main shopping streets and all of Edinburgh's central attractions.



Essential Information

6-day programme
Activities and cultural excursions
Central Edinburgh
Trinity GESE spoken exam
Homestay accommodation

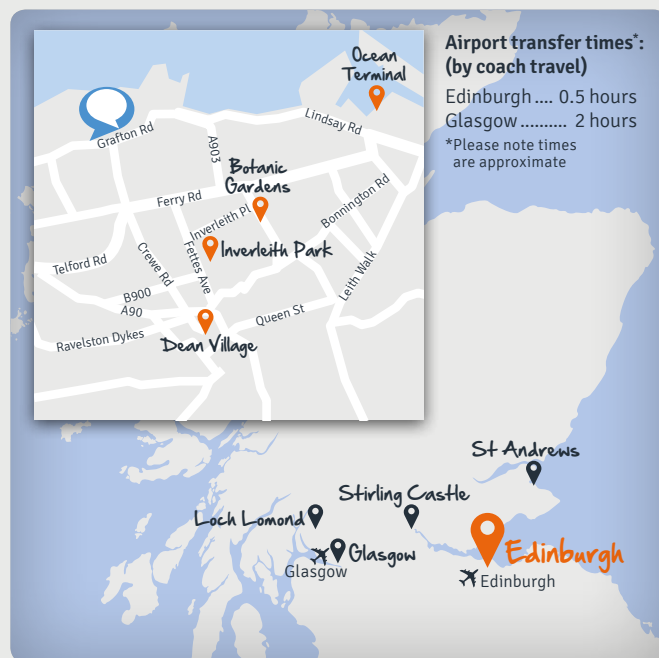


College Address:	Edinburgh Language Centre, 62- 66 George Street, Edinburgh EH2 2LR From 28 June – 7 August 2015: Drummond Community High School, 41 Bellevue Pl, Edinburgh, EH7 4BS
Centre type:	City centre school or local high school (15-minute walk from Princes St)
Accommodation:	Homestay
Capacity:	150
Age range:	12 – 17*
Arrival day:	Sunday
Course start dates:	28, 5, 12, 19, 26 June; 2, 9, 16, 23 August**

*Individual students must be aged 14-17. Please note that age restrictions and conditions apply. In this centre, over 18s may be present on junior courses in closed groups. Adult students may also be present in the school. Courses may be held at Drummond Community High School or Edinburgh Language Centre on George Street. **Groups are accepted year-round in a closed environment

Edinburgh College (Telford Campus)

Located on the banks of the Firth of Forth, a short bus journey from Edinburgh city centre, this impressive modern campus has excellent sports and activity facilities. Edinburgh College makes a great venue for a summer programme.

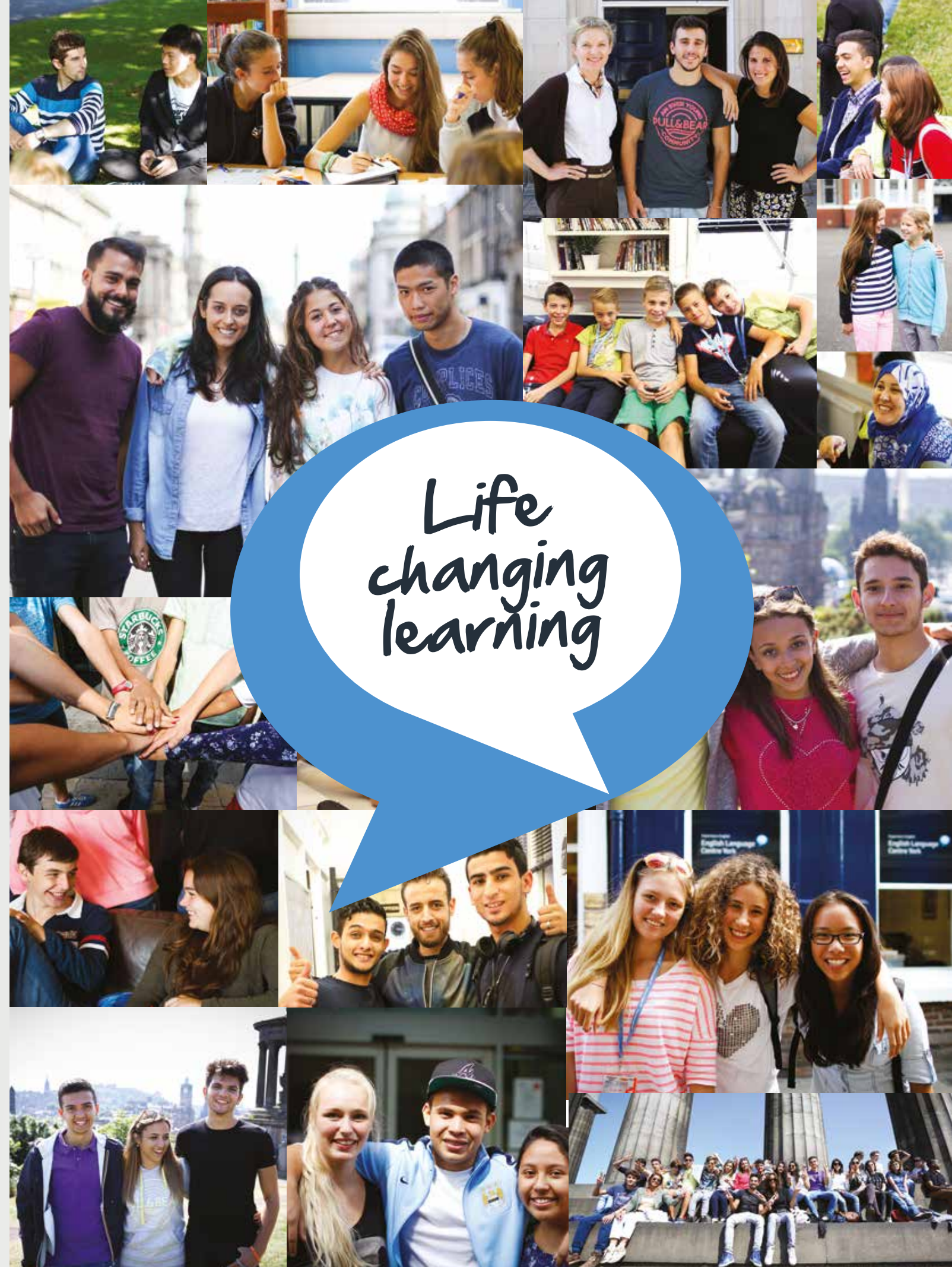


Essential Information

Full 7-day programme
Sports facilities and social space
20-minute bus ride to central Edinburgh
Modern college campus
Trinity GESE spoken exam

College Address:	Edinburgh College, 350 West Granton Road, Edinburgh, EH5 1QE
Centre type:	College Campus
Accommodation:	Residential or homestay
Capacity:	258 (108 residential; 150 homestay)
Age range:	12 – 17*
Arrival day:	Sunday
Course start dates:	28 June; 5, 12, 19, 26 July; 2, 9 August**

* Please note that age restrictions and conditions apply, please ask for further details on registration. Individual students must be over the age of 12, or 14 if staying in homestay accommodation. ** Start dates for individual students (rather than groups) are 28 June; 5, 12, 19, 26 July; 2 August.



Terms and Conditions

CONDITIONS

Please read these booking conditions carefully, they form an important part of the contract for your booking.

YOUR CONTRACT

Your contract is with ELC English Limited (trading as Experience English), a company incorporated and registered in England and Wales, with its registered office at TUI Travel House, Crawley Business Quarter, Fleming Way, Crawley, West Sussex RH10 9QL.

When you make a booking, you guarantee that you are 18 years or over and have the authority to accept and do accept on behalf of your party the terms of these booking conditions. If you are under 18 years, a parent or guardian must make the booking on your behalf and accept these booking conditions. On receipt of the completed application form and full fees, we will issue confirmation of the booking including a confirmation invoice, acceptance letter and, if required, a visa support letter will then be issued. A contract will exist as soon as we issue our confirmation invoice. This contract is made on the terms of these booking conditions. If you made your booking in any jurisdiction other than Scotland this contract, and any other claim or dispute arising from or related to this contract, will be governed by English law and the courts of England and Wales shall have exclusive jurisdiction over any claim arising out of it. If you made your booking in Scotland (including booking via the internet and through our reservation team based in Edinburgh), this contract, and any other claim or dispute arising from or related to this contract, will be governed by Scottish law and the courts of Scotland shall have exclusive jurisdiction over any claim arising out of it.

MAKING A BOOKING AND PAYMENT

All students must book in advance of their course start date. Full booking fees are due and must be paid at the time of booking. If you require the services of a courier to deliver your documentation, the cost incurred will be paid by you. All payments are to be made in Pounds Sterling. In some cases these rules do not apply to wholesale partners whose payment terms are outlined in the wholesale agreement made between the two parties.

You can pay by cash, bank transfer, cheque or credit card. For credit card payments, we add a 3% surcharge on the total amount to cover card charges. There may be a charge for direct debit card payments, please ask at time of payment. Please do not send cash in the post. Bank details for bank transfers and details for whom to make cheques payable should be requested at time of booking. We reserve the right to cancel a booking without refund or compensation if payments are not made when due.

THE PRICE YOU PAY

All prices we advertise are accurate at the date published, but we reserve the right to change any of those prices from time to time. You will be advised of the current price of the course, or the course and accommodation that you wish to book before your contract is confirmed.

IF YOU MAKE A CHANGE TO YOUR COURSE

If you wish to make a change to the date of your course, the person who made the booking must put such request in writing to us at least 28 days before the course start date or the arrival date whichever is earlier. If such notice is not given an amendment fee of £50 will be charged. If you change the date of your course more than once, an amendment fee will be charged for the second and any subsequent changes, irrespective of notice given. Please note that we cannot guarantee that we will be able to accommodate your request but we will endeavour to do so. Students with one-to-one lessons need to give 24 hours' notice if they wish to re-arrange a lesson. No refund or rearrangement will be given for such non-attended classes or when less than 24 hours' notice is given.

IF YOU CANCEL YOUR COURSE

If you wish to cancel a course for any reason, the person who made the booking must put such request to cancel in writing to us. If you wish to cancel a course due to a visa refusal, we will refund any course fees which have been paid by you, less the registration fee and any other charges we may incur as a result of your cancellation, provided that: a) Notice of your visa refusal is sent to us a minimum of one week before your course commences; and b) Official written confirmation of the visa refusal from the Home Office or British Consulate/Embassy is sent to us before the course was due to commence.

If you wish to cancel a course for any reason other than visa refusal, course refunds for such cancellations depend on the amount of notice given and are as specified below:

- **More than 28 days before the course start date or the arrival date whichever is earlier:** refund of total course fees, less deposit, registration fee and any other charges we may incur as a result of your cancellation.

- **Between 28 – 15 days (inclusive) before the course start date or the arrival date whichever is earlier:** refund of 75% of total course fees, less registration fee or any other charges we may incur as a result of your cancellation.

- **Between 14-8 days (inclusive) before the course start date or the arrival date whichever is earlier:** refund of 50% of total course fees, less registration fee or any other charges we may incur as a result of your cancellation.

- **7 days or less before the course start date or the arrival date whichever is earlier:** no refund will be given if you choose to cancel the course once it has commenced. Please note in the event that you cancel your booking for any reason, amendment fees paid by you in respect of the booking, if any, are non-refundable.

IF YOU CHANGE OR CANCEL YOUR ACCOMMODATION

No refund will apply for the cancellation of accommodation on or after arrival. If you cancel your accommodation, you are required to give 21 days' notice and will receive a refund of outstanding fees less the £50 Administration Charge after the notice period. You will receive refunds (if appropriate) only after your return to your home country. We will refund only to the person from whom the funds originated. For students booking through agents, the School will check with the agent before arranging refunds. Refunds can only be made after full payment from the agent has been received by the School. Refunds are always made back to the bank account from which they were received.

ACCOMMODATION

At our discretion, Students may be required to book single room accommodation instead of twin room accommodation. Students arriving between the hours of 21:00 – 09:00 may be asked to book alternative accommodation on their first night at their own cost to avoid a late or early arrival to their intended accommodation. ELC English Limited reserves the right to charge a supplement for any student or group arriving between the hours of 21:00 – 09:00.

ARRIVAL / DEPARTURE DATES

Arrivals and departures should normally be on a Sunday (unless specified otherwise in Experience English marketing materials) ready for starting your course on a Monday. We reserve the right to arrange alternative (e.g. Hotel) accommodation for any nights out with the standard programme dates at the student's cost. There will be no compensation due for late arrivals and/or missed lessons, activities and excursions missed as a result of not arriving on a scheduled arrival date.

ATTENDANCE, ABSENCES AND EARLY DEPARTURES

For students studying on an adult course you are required to attend at least 90% of your course. For students studying on Young Learner course full attendance is required. Absence from lessons is not compensated. If you are absent from school for 3 or more days we will contact you by telephone or email to see if we can be of any help or assistance. If we receive no response we will try and contact you again. Where relevant to a visa application, we are duty bound to notify the UK Home Office immediately in the event of persistent non-attendance or course termination.

POLICIES ON HOLIDAYS

If you are studying on an adult course you are allowed to take 2 weeks holiday for every 12 weeks that you study: for a course of 12 weeks, you can take a maximum of 2 weeks holiday; for a course of 13 to 24 weeks, you can take a maximum of 4 weeks holiday; for a course of 25 to 36 weeks, you can take a maximum of 6 weeks holiday; for a course of 37 to 52 weeks, you can take a maximum of 8 weeks holiday. You must give at least 21 days' notice to the school in writing. Please note that the school has the right to refuse a request for holiday. Some Academic Year and Semester Courses have fixed dates of operation.

If you are studying on a Young Learner course then holidays from your course are not permitted

TRANSFERS

Where a coach or private taxi transfer has been booked through the Company, flight details should be received no later than 14 days prior to arrival. The Company reserves the right to levy a charge of £20 per person should these details not be received within the 14 days. Please see the 'Course fee list' for the conditions of the transfer prices.

ADMINISTRATION CHARGE

All changes outside the notice period in course dates or accommodation, including holidays, have a charge of £50, which must be paid before the change is processed.

CERTIFICATES

All students are issued with a certificate on the last day of their course on request. The certificate confirms the level of study at the end of the course.

The Company shall levy a charge of £15 per set of certificates that it has to re-issue once the course has finished. Should this occur the certificates shall only be re-issued once full payment has been received.

PUBLIC HOLIDAYS

There are no reductions or discounts in tuition fees for courses that include a public holiday.

IF WE CHANGE OR CANCEL YOUR BOOKING

Whilst we aim to provide the course, and where applicable accommodation, as booked, we reserve the right to change or cancel your booking. Operation of all bookings are dependent on a minimum number of persons booking the course and we reserve the right to cancel or change your booking for reasons of consolidation due to minimum numbers not being attained on your course. Subject to 'Our Liability' section below:

- (a) if we make a minor change to your booking we will advise you as soon as reasonably possible;

- (b) if we make a major change to your booking we will advise you as soon as reasonably possible if there is time before your course start date or your arrival date whichever is earlier. You will have the choice of either (i) accepting the change of arrangements, (ii) accepting an offer of alternative arrangements of comparable standards from us if available (you will pay the difference if it was advertised as a higher price than your original booking, or receive a refund of the difference if it was advertised at a lower price than your original booking) or (iii) accepting a refund of the monies you have paid to us for your original booking. Subject to 'Our Liability' section below, if we cancel your booking, we may be able to offer you an alternative. If you accept it, you will pay the difference if it was advertised at a higher price than your original booking, or receive a refund of the difference if it was advertised at a lower price than your original booking, or we would refund the monies you have paid to us for your original booking. We will not be responsible to pay any compensation following a change or a cancellation by us and we will not be liable to reimburse you for any amendment or cancellation fees you incur in terms of other arrangements you have made with other providers under separate contracts.

CONDUCT AND BEHAVIOUR

When you make a booking through us, you accept responsibility for the proper conduct of all parties included on your booking. We reserve the right to cancel at any time any student's course, or course and accommodation, with no refunds, in the event that, in the reasonable opinion of the Company or the school, the student's behaviour is disruptive or unsatisfactory (including without limitation causes or is likely to cause danger, upset or distress to anyone else or damage to property). Our decision is final. We shall be under no obligation whatsoever to pay compensation or meet any costs or expenses you may incur as a result of your course, or course and accommodation, being terminated. Please note that if your visa status in the UK changes or you are found to be in contempt of visa regulations, we reserve the right to terminate your course without refund of course or accommodation fees.

IF THE STUDENT IS UNDER 18

If the student is under 18 then their parent or guardian is hereby deemed to accept these terms and conditions and further accepts that:

1. They will permit the student to travel by public transport;
2. They authorise their child to take part in all tourist, sporting and cultural activities associated with the course;
3. They permit the student to be treated by a doctor in an emergency. TUI Language will use all reasonable endeavours to make contact with the parent or guardian in this event;
4. They will pay any third party fees associated with the above treatments;
5. They will provide the school with a contact telephone number in case of emergencies.

OUR RIGHT TO SUBCONTRACT

We shall take reasonable care and skill in providing our services to you in accordance with industry standards. We reserve the right to subcontract various elements of our services (for example accommodation) to reputable companies selected by us. We shall procure that our subcontractors also take reasonable care and skill in providing such subcontracted elements of our services to you in accordance with industry standards.

OUR LIABILITY

We will not be liable:

- (a) where any failure in the performance of the contract is due to:

- i. you; or
- ii. acts, events, omission or accidents beyond our reasonable control or the reasonable control of our suppliers, including without limitation war, threat of war, riots, civil disturbances, actual or threatened terrorist activity and its consequences, industrial disputes, natural and nuclear disasters, fire, epidemics, health risks and pandemics, unavoidable and unforeseeable technical problems with transport for reasons beyond our control or that of our suppliers; closed or congested airports or ports, hurricanes and other actual or potential severe weather conditions, flood, and any other similar events;

- (b) for loss of students' property. No compensation, costs, expenses or any other sums will be paid by us in these circumstances. Nothing in this contract shall limit or exclude the liability of either party for death or personal injury resulting from negligence.

INSURANCE

It is compulsory that every student, group leader and or accompanying adult takes out insurance to cover such events as course cancellation or curtailment; loss of personal effects; loss of passport or tickets; medical expenses and repatriation; personal liability and personal accident. Failure to do so could cause serious problems in the case of an emergency. It is your responsibility to ensure that you are adequately insured. For students staying in accommodation (homestay or residential) arranged by the Company, insurance covering personal liability is highly recommended. If you do not have an insurance policy and an incident occurs, you will be responsible for all costs incurred.

COMPLAINTS

Our complaint procedure is as follows:

If you have a complaint regarding any aspect of the services provided, you should immediately notify your school. In the unlikely event this is not resolved to your satisfaction; you should make an immediate complaint in English in writing to head office at ELC English Limited, Third Floor, Elder Street, Multrees Walk, Edinburgh, EH1 3DX. We will investigate your complaint and if we judge it to be reasonable we will make an appropriate recompense (financial or otherwise). In order to be given a reasonable chance of addressing your complaint, please ensure it is received within one month of the end of your course. If the complaint is not resolved to your satisfaction, you may contact English UK.

BRIBERY

ELC English Limited shall not engage in any activity, practice or conduct which would constitute an offence under sections 1, 2 or 6 of the Bribery Act 2010 if such activity, practice or conduct had been carried out in the UK.

PUBLICITY

These booking conditions, our brochures, our website and other publicity materials are the responsibility and property of the Company and the details are published in good faith as of 1 November 2011. We cannot be held responsible for any changes that become known or happen after the brochure is produced and the most up-to-date information can be found on our website. We will use reasonable endeavours to inform you of any material changes for your course before commencement of the course.

USE OF PHOTOS AND COMMENTS

By agreeing to these terms and conditions you acknowledge that we or our suppliers or TUI Travel PLC may use any photo(s)/image(s)/video(s) we, or someone on our behalf take of you or any comments (written or verbal) you make during or in connection with your tour for our promotional/marketing purposes (such as including them in our brochure / website / social media) without obtaining your further specific permission or making any payment to you. Such use may include mentioning your name, age and town / city / area of residence.

EMAIL CONTACT

By agreeing to these booking conditions, you consent to us (including any TUI Travel Plc group of companies) using your email addresses gained at the time of booking and during your period of study for future marketing purposes from time to time, including without limitation about special offers, products and services by email. For further details regarding use of your information, please see the 'Privacy Policy' section below, including for information on how to unsubscribe to future marketing by us (including any TUI Travel Plc group of companies and associated companies).

Experience English

PRIVACY POLICY

The Company's Privacy Policy sets out what information we collect, how we collect it, and what we do with it.

(a) Your Information

This refers to information such as your name, contact details, travel preferences and special needs/disabilities/ dietary requirements that you supply us or is supplied to us, including any information about other persons on your booking ("your information").

Your information is collected when you request information from us, contact us (and vice versa) or make a booking. You are responsible for ensuring that other members of your party are aware of the content of our Privacy Policy and consent to your acting on their behalf in all your dealings with us. We will update your information whenever we can to keep it current, accurate and complete.

(b) Our Use of Your Information

(1) For the purpose of providing you with our services, we may disclose and process your information outside the UK/EEA. In order for you to travel abroad, it may be mandatory (as required by government authorities at the point(s) of departure and/or destination) to disclose and process your information for immigration, border control, security and anti-terrorism purposes, or any other purposes which they determine appropriate. These requirements may differ depending on your destination and you are advised to check. Even if not mandatory, we may exercise our discretion to assist where appropriate. (2) We may collect and process your information for the purposes set out in our registration with the Office of the Information Commissioner, and disclose the same to our group companies for business purposes and also to companies who act as "data processors" on our behalf, or to our service providers operating systems or business functions on our behalf (some of whom are located outside the UK/EEA). These business purposes include administration, providing services (and contacting you where necessary), customer care, service quality, business management and operation, reorganisation/ restructuring/sale of our business (or group companies), risk assessment, security, fraud and crime prevention/ detection, monitoring, research and analysis, marketing, customer purchasing preferences and trends, dispute resolution, credit checking and debt collection. (3) Information (such as health or religion) may be considered "sensitive personal data" under the Data Protection Act 1998. We collect it to cater to your needs or act in your interest, and we are only prepared to accept sensitive personal data on the condition that we have your positive consent. By booking with us you also agree for your insurers, their agents and medical staff to disclose relevant information and sensitive personal data to us in circumstances where we need to act on your behalf or in the interest of passengers or in an emergency.

If you do not agree to Our Use of Your Information above, we cannot do business with you or accept your booking.

(c) Direct Marketing Material

(1) We (including any TUI Travel Plc group of companies) may from time to time contact you with information on offers of goods and services, brochures, new products, forthcoming events or competitions from our holiday divisions and our group companies. Our websites will assume you agree to electronic communications when you make a booking. (2) You may indicate your preference regarding receiving third party direct marketing material. (3) If you do not wish to receive such information or would like to change your preference, please refer to point (2) of "Your Rights" below.

(d) Your Rights

(1) On completing our Data Subject Access Request form, you are entitled to a copy of the information we hold about you (for a £10 fee) and to correct any inaccuracies. (2) You have the right to ask in writing not to receive direct marketing material from us. If available, you can amend your previous preference on our website(s), use our "unsubscribe email" or refer to our literature containing instructions. Once properly notified by you, we will take steps to stop using your information in this way. (3) For a list of our group companies or brands, please send us your request.

Please write to English Language Centres, Legal Department, TUI Travel House, Crawley Business Quarter, Fleming Way, Crawley, West Sussex RH10 9QL.

(e) Foreign Controls

Outside the European Economic Area (EEA), note that controls on data protection in such countries may not be as strong as the legal requirements in this country.

(f) Use of Tools/"Cookies" and Links to Other Websites

If our contact and dealing with you is via our website(s), we may use "cookies". Cookies allow us to identify your computer but not you personally. You can set your web browser to refuse cookies. However, you may not be able to enjoy all the facilities or book via our website if you do so. However, if you also receive our email marketing, we will tailor the information we send you unless you tell us not to. This means we may use information we hold and cookies to identify your individual web site search behaviour and preferences.

This will enable us to send you more personalised and relevant communications. You will be given the opportunity on every communication to opt-out of this personalisation. We collect information relating to customer trends and patterns and use cookies and software tools to measure site usage and related information. If you are making a purchase, we may also use cookies to keep track of the transaction from one web page to another. Our website(s) may contain links to other sites not controlled by us.

It is your responsibility to check the status of these sites.

(g) Monitoring

To ensure that we carry out your instructions accurately, improve our service and for security, we may monitor and/ or record:

(1) telephone calls; (2) activities using CCTV in and around our premises; and (3) transactions and activities on our website. All recordings are and shall remain our sole property.

(h) Security Statement

We have taken all reasonable steps and have in place appropriate security measures to protect your information.

(i) Changes to this Policy

Any changes to this Policy will be either posted on our website, brochure and/or made available on request.



Partner details:



Experience English, Third Floor, Elder House, Elder Street, Edinburgh, EH1 3DX
e: info@experienceenglish.com t: +44 208 939 0402